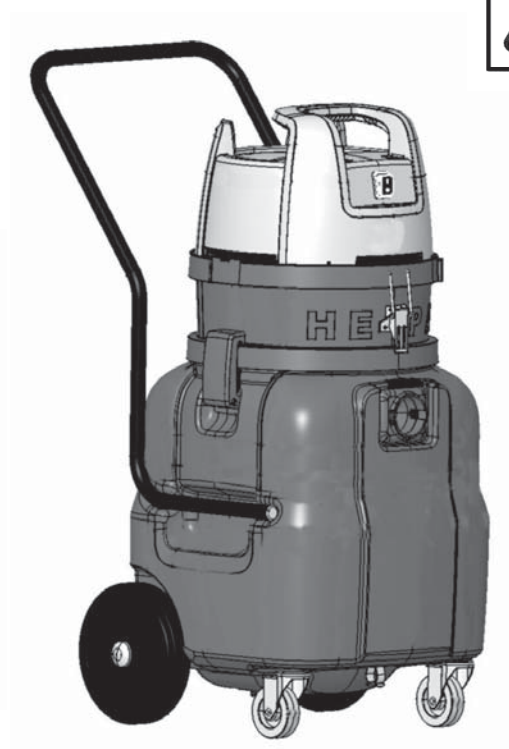


ELIMINATOR I / ELIMINATOR II



**INSTRUCTIONS FOR USE
MODE D'EMPLOI
INSTRUCCIONES DE USO**

ENGLISH	3-9
FRANÇAIS	3,10-13
ESPAÑOL	3,14-17
DATA	18

SAVE THESE INSTRUCTIONS

CONSERVER CES INSTRUCTIONS

GUARDE ESTAS INSTRUCCIONES

USA

Nilfisk-Advance America Inc.
300 Technology Drive
Malvern, PA 19355

Tel.: +1 610 647 6420
Fax: +1 610 647 6427
www.pa.nilfisk-advance.com
e-mail: email@nilfisk-advance.com

Canada

Nilfisk-Advance Canada Company
396 Watline Avenue
Mississauga, Ontario L4Z 1X2

Phone: +(1)905 712 3260
Fax: +1 905 712 3255
marketing@nilfisk-advance.ca

HEPA-FILTER, EL FILTRO HEPA, LE FILTRE HEPA



WARNING

HEPA-filter must be installed while working with hazardous materials. Failure to do so will expose people in the work area and others to hazardous materials which is a serious health risk.

EMPTYING

If this vacuum cleaner is used to collect hazardous material, do not attempt to open or empty its contents without personal protective clothing and respiratory protection. This procedure must be completed in a contained environment.



AVISO

El filtro HEPA debe ser instalado cuando trabaje con materiales peligrosos. De no hacerlo así expondrá a las personas dentro de su zona de trabajo y a otras ajenas a él a estos materiales peligrosos, lo cual constituye una grave amenaza para la salud.

VACIADO

Si se utiliza la aspiradora para recoger materiales peligrosos, no intente abrirla o vaciar su contenido sin la adecuada indumentaria protectora y la protección respiratoria.



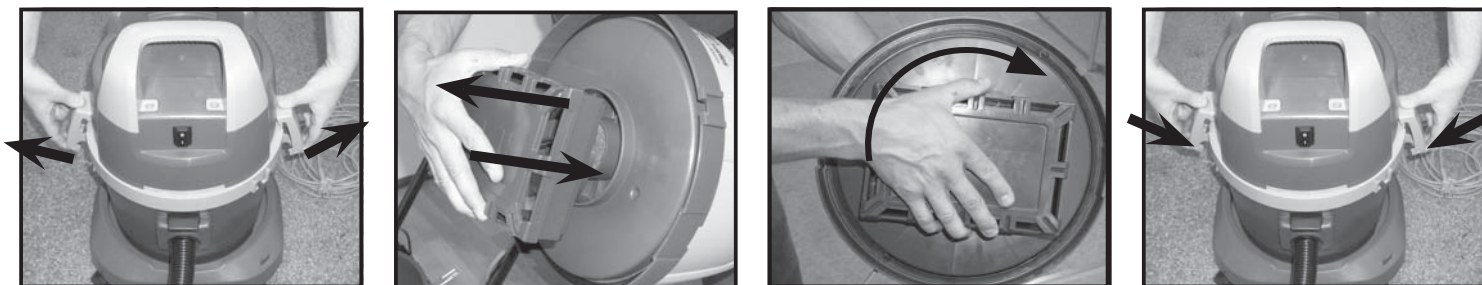
ATTENTION

Utiliser le filtre HEPA lorsque l'on travaille avec des substances dangereuses et nocives pour éviter que les personnes présentes ou se trouvant à proximité n'y soient exposées et que leur santé ne soit mise en péril.

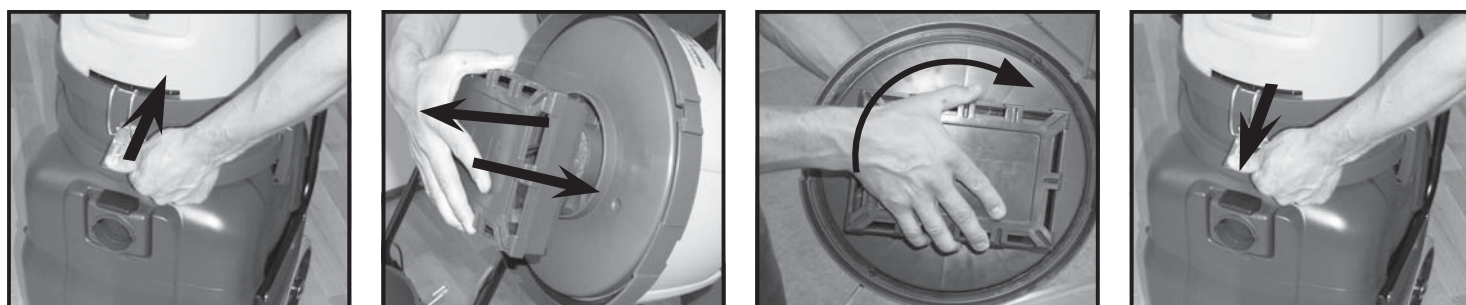
VIDAGE

Si l'appareil est utilisé pour aspirer des substances dangereuses, ne jamais tenter de l'ouvrir ou de le vider sans porter de vêtements protecteurs et une protection respiratoire.

HEPA-FILTER REPLACEMENT ON ELIMINATOR I:



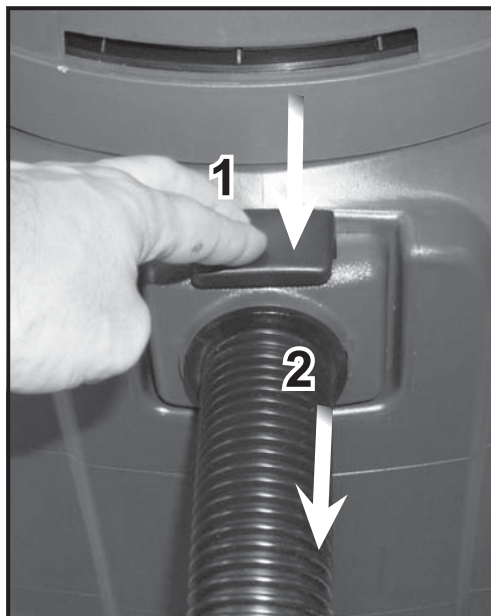
HEPA-FILTER REPLACEMENT ON ELIMINATOR II:



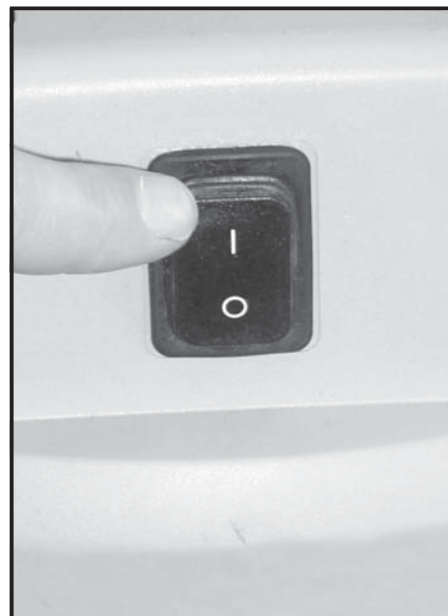
Attach hose



Remove hose



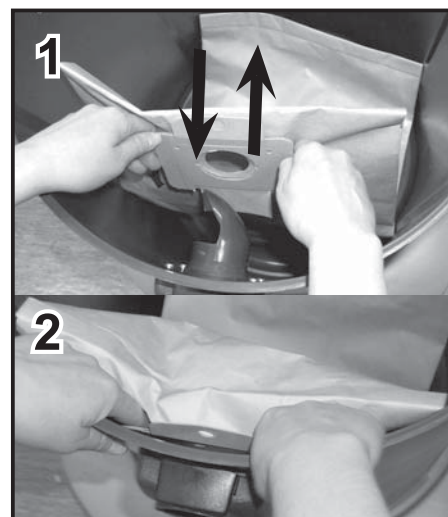
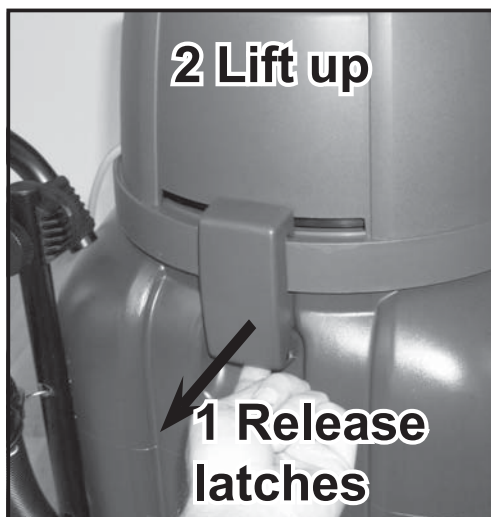
Switch on/off



Dry use

Remove the motor top

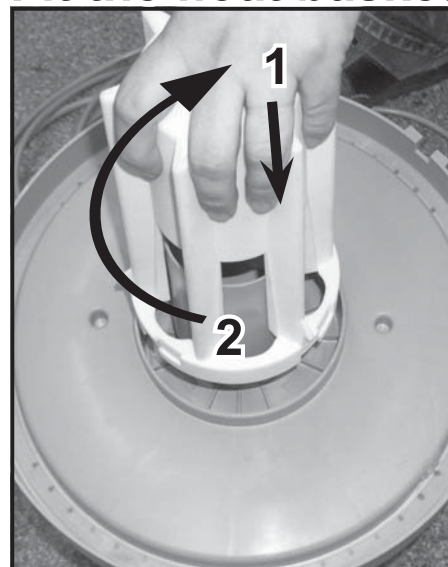
Dust bag



Wet use

Fit the float valve

Fit the float basket



Wind from machine



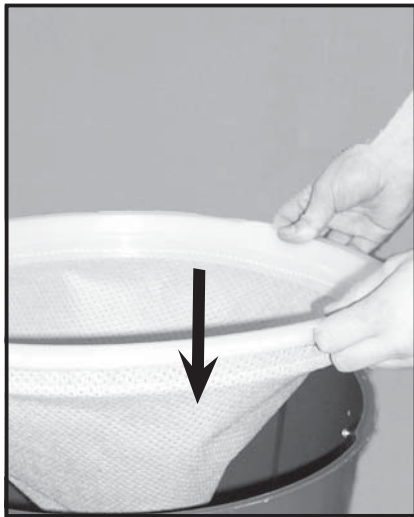
Cord storage



Accessory storage



Main filter



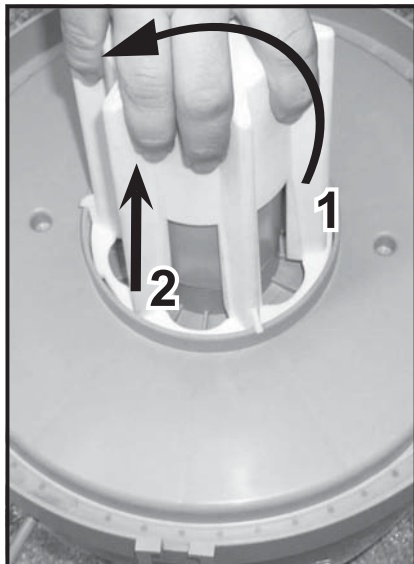
Main filter



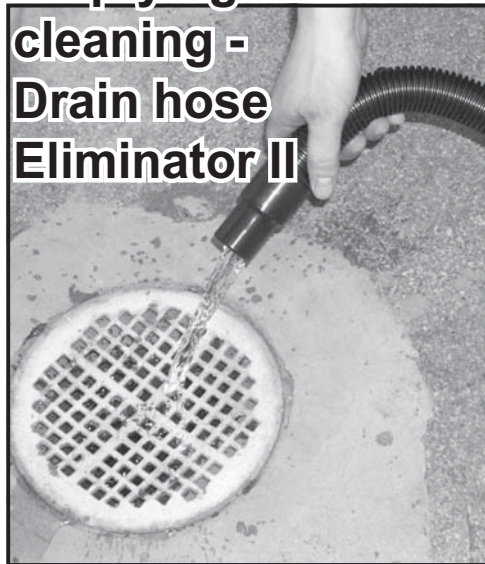
Cartridge filter



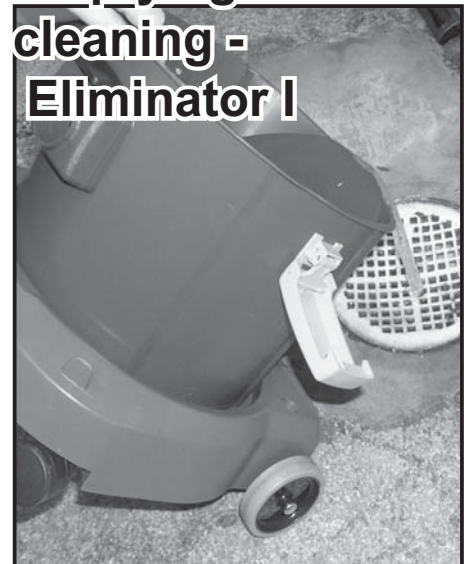
To remove float



Emptying after Wet cleaning - Drain hose Eliminator II



Emptying after Wet cleaning - Eliminator I



SAFETY INSTRUCTIONS

**THIS VACUUM CLEANER IS DESIGNED FOR COMMERCIAL USE.
ACCIDENTS DUE TO MISUSE CAN ONLY BE PREVENTED BY THOSE USING THE MACHINE.
READ AND FOLLOW ALL SAFETY INSTRUCTIONS.**



WARNING!

To reduce the risk of fire, electric shock, or injury, please read and follow all safety instructions and caution markings before use. This vacuum cleaner is designed to be safe when used for cleaning functions as specified. Should damage occur to electrical or mechanical parts, the cleaner and / or accessory should be repaired by a competent service station or the manufacturer before use in order to avoid further damage to the machine or physical injury to the user.

- Do not use outdoors.
- Do not leave the machine when it is plugged in. Unplug from the socket when not in use and before maintenance
- Do not use with damaged cord or plug. To unplug grasp the plug, not the cord. Do not handle plug or cleaner with wet hands. Turn off all controls before unplugging.
- Do not pull or carry by cord, use cord as a handle, close a door on cord, or pull cord around sharp edges or corners. Do not run cleaner over cord. Keep cord away from heated surfaces.
- Keep hair, loose clothing, fingers and all parts of the body away from openings and moving parts. Do not put any objects into openings or use with opening blocked. Keep openings free of dust, lint, hair, and anything else that could reduce the flow of air.
- **Caution:** Do not use this appliance for vacuuming dust which may be considered hazardous to health without HEPA-filter mounted.
- Do not use to pick up flammable or combustible liquids such as gasoline, or use in areas where they may be present.
- Do not pick up anything that is burning or smoking, such as cigarettes, matches or hot ashes.
- The appliance is not intended for use by young children or infirm persons. Young children should be supervised to ensure that they do not play with the appliance.
- Use extra care when cleaning on stairs.
- Do not use unless filters are fitted.
- If the cleaner is not working properly or has been dropped, damaged, left outdoors, or dropped into water, return it to a service center or dealer.
- Use only as described in this manual and only with the manufacturer's recommended attachments.
- This appliance is provided with double insulation. Use only identical replacement parts. See instructions for servicing.

GENERAL INFORMATION

BEFORE YOU PLUG IN YOUR CLEANER, check the rating plate located on the cleaners back side to see if the rated voltage agrees within 10% of the voltage available.

DO NOT OIL, the motor in your new cleaner is permanently lubricated and sealed. Do not oil the motor at any time.

During shipping, the dust bag may have become dislodged. Check the bag to insure proper seating before attempting to use the cleaner. Do not operate the cleaner without the filters installed as damage may result to the motor.

The machine is equipped with a thermal breaker to protect the motor and other vital machine parts from overheating. Should this breaker open, you will have to wait at least 5-10 minutes before you try to start it again. While you are waiting, switch the machine off and unplug it, then check the hose, dust bag and filters to be sure that nothing is blocking the flow of air through the machine.

Note! It is necessary to reset the machine by pressing the on/off button, the machine will not start again until this is done.

For longer service life and safe use of your vacuum cleaner, we recommend the following guidelines: Your cleaner is designed to pick up dirt and dust particles and water (model Eliminator I needs to use the Nilfisk Float Chamber kit in order to pick-up water). Avoid picking up hard or sharp objects with your cleaner to avoid bag breakage, clogging or possible motor damage.

SERVICE INFORMATION

To obtain consistent performance over the life of your vacuum, read through these instructions and keep them handy for future reference. If you require service, contact the dealer from whom the vacuum was purchased, or the local authorized Service Station. Always refer to your Service Station for complete service information. For prompt and complete service information, always refer to the model, type and serial number indicated on the rating plate.

IMPORTANT!

The machine is equipped with a specially designed cord which if damaged, must be replaced by a cord of the same type. This is available at authorised service centres and dealers and must be installed by trained personnel.

NOTE!

Remove the plug from the socket before performing maintenance. Before using the machine make sure that the frequency and voltage shown on the rating plate corresponds with the supply voltage.

Specifications and details are subject to change without prior notice. The accessories shown in the pictures may vary from model to model.

GROUNDING / DOUBLE INSULATION INSTRUCTIONS

GROUNDING INSTRUCTIONS (USA, Canada)

Applicable to machines with a three-pin plug

This appliance must be grounded. If it should malfunction or breakdown, grounding provides a path of least resistance for electric current to reduce the risk of electric shock. This appliance is equipped with a cord having an equipment-grounding conductor and grounding plug. The plug must be plugged into an appropriate outlet that is properly installed and grounded in accordance with all local codes and ordinances.



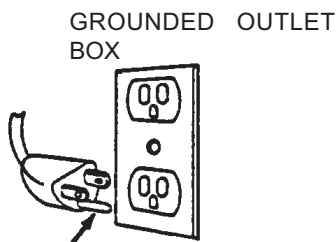
DANGER!

Improper connection of an equipment-grounding conductor can result in risk of electric shock. Check with qualified electrician or service person if you are in doubt as to whether the outlet is properly grounded. Do not modify the plug provided with the appliance. If it will not fit the outlet, have proper outlet installed by a qualified technician.

This appliance is for use on a nominal 120 volt circuit and has a grounding plug that looks like the plug illustrated in Figure A. A temporary adaptor which looks like the adaptor illustrated in Figure B may be used to connect this plug to a two-pole receptacle, as shown, if a properly grounded outlet is not available. The temporary adaptor should be used only until a properly grounded outlet, Figure A, can be installed by a qualified electrician. The green colored rigid ear, lug, or the like extending from the adaptor must be connected to a permanent ground such as a properly grounded outlet box cover. Whenever the adaptor is used, it must be held in place by a metal screw.

NOTE! This temporary adaptor is not permitted in Canada

FIGURE A



GROUNDING BLADE IS LONGEST OF THE THREE BLADES

SERVICING OF DOUBLE-INSULATED APPLIANCES

Applicable to machines with a two-pin plug

In a double-insulated appliance, two systems of insulation are provided instead of grounding. No grounding means is provided on a double-insulated appliance, nor should a means for grounding be added to the appliance. Servicing a double-insulated appliance requires extreme care and knowledge of the system, and should be done only by qualified service personnel. Replacement parts for a double-insulated appliance must be identical to the parts they replace. A double insulated appliance is marked with the words

"DOUBLE INSULATION" or "DOUBLE INSULATED."

The symbol (square within a square) may also be used on the product.



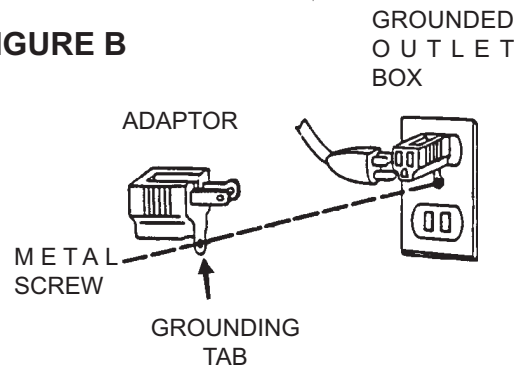
SERVICE INFORMATION

To obtain consistent performance over the life of your vacuum, read through these instructions and keep them handy for future reference. If you require service, contact the dealer from whom the vacuum was purchased, or the local authorized Service Station. Always refer to your Service Station for complete service information. For prompt and complete service information, always refer to the model, type and serial number indicated on the rating plate.

IMPORTANT

If the supply cord of this appliance is damaged, it must be replaced by a repair shop appointed by the manufacturer as special purpose tools are required.

FIGURE B



INSTRUCTIONS FOR USE

Dry Use

This machine has a number of dry material pick up options that should be considered.

* The Eliminator I shall always have the main filter mounted in the machine when picking up dry material.

* The Eliminator II shall always have the main filter and the Float Chamber Assembly mounted when picking up dry material. This is also valid when using a dust bag.

Main filter

The Eliminator I and II machines are both equipped with main filters directly from the factory. The main filter should always be used when collecting dry material but should never be used when collecting liquids or moist material. The main filter can be used alone to collect a large volume of dry material directly into the tank.

The main filter also serves as a pre-filter for the HEPA filter and serves to extend the life of the HEPA. The main filter should also be used when using the dust bag to collect material. To prevent the main filter from collapsing during use, the float basket or HEPA filter must be installed on the machine behind the main filter.

Dust Bag

A dust bag allows easy collection and disposal of dry material.

Cartridge Filter

The optional cartridge filter should only be mounted over the float basket on the float chamber assembly.

HEPA filter

The Eliminator I and II machines are both equipped with a HEPA filter standard from the factory. The HEPA filter is attached to the underside of the motor head and provides true HEPA filtration according to DOP MIL-STD-282 specifications. To protect and prolong the life of the HEPA filter, the main filter must be installed into the machine's collection container. The Eliminator I may have the HEPA filter mounted directly to the motor head without using the float chamber assembly.

Eliminator II only: The float chamber assembly must always be used with HEPA filter.

Dry Collection and Filter Options

HEPA + Main Filter = Good filtration and large collection capacity.

HEPA + Main Filter + dust bag = Better filtration and easy disposal of dry material.

HEPA + Float assembly with cartridge filter = Better filtration than a dust bag.

How to Use Main filter

Using the main filter by itself allows the entire tank to be used to collect dry material. The main filter must be installed between the motor top and tank or between the float chamber assembly and tank. The main filter is washable. Shake off all excess debris. Wash using mild detergent. Dry thoroughly before use.

How to Use the Dust Bag

The dust bag provides a clean and simple way to dispose of dry material. It is not reusable. Secure the dust bag to the inlet on the inside of the tank by sliding the cardboard piece with rubber membrane over the inlet. Make sure the bag is pushed on as far as it will go. During use, check the bag frequently and remove and dispose of when full.

How to Use the Cartridge Filter

The use of the dust bag helps to ensure longer life of the cartridge filter by acting as a pre-filter for larger debris. The optional cartridge filter should only be mounted over the float basket on the float chamber assembly. Install the cartridge filter by pushing it in place so it slides over the filter basket. The cartridge filter is washable. It may also be cleaned by gently tapping it to remove the excess debris. Be careful not to puncture or damage the filter media. Do not use compressed air to clean the filter.

Float Chamber Assembly and HEPA Filter

The float chamber assembly and HEPA filter work together to provide true HEPA filtration efficiency capturing 99.97% of particles that are 0.3 microns and larger. The float chamber assembly must always be used with the HEPA filter on the Eliminator II machine. The Eliminator I may have the HEPA filter mounted directly to the motor head without using the float chamber assembly.

The HEPA filter is not washable and no maintenance should be performed on the filter itself. Once the HEPA filter becomes clogged it should be disposed of in accordance with federal, state and local laws and regulations.

Wet Use

Before using the Eliminator I or II machine for wet pickup, install the float chamber assembly between the motor top and tank. The float chamber assembly is equipped with a removable float basket. Inside the float basket is the float valve. This valve stops the flow of air when the maximum fluid level has been reached in the tank, preventing damage to the motor. When the maximum fluid level is reached there will be a significant change in sound and air flow through the hose will decrease. The float shut off should be cleaned after each use with a damp cloth and mild detergent.

When re-installing the float basket, make sure the float itself is installed correctly. The open end should be pointing down into the tank and the closed end should face upwards towards the motor top. Installing the float in the wrong orientation will allow water to collect inside the float. In this case it will not float and will not shut off the flow of air properly. Water will then be drawn into the motor top and will destroy the vacuum.

For wet applications, no other filters should be used except the HEPA filter.

Draining

The Eliminator II machine is equipped with a rear mounted drain hose that makes emptying the contents quick, easy and clean. Simply remove the end cap and slowly lower the drain hose to release the contents.

USE AND SERVICE INSTRUCTIONS WHEN USED IN HAZARDOUS SUBSTANCE RECOVERY



WARNING

To reduce the risk of exposure to hazardous substances you must read and follow all safety instructions in this Instructions for Use manual.

Attention Employer

- Please ensure the Instructions for Use manual are provided to and understood by your employees or any other persons who use this equipment.
- To list all toxic and hazardous substances would be beyond the scope of these instructions. It is the employer's and operator's responsibility to identify hazardous or toxic substances which may be collected by the equipment during operation. Such information must be communicated to operators and other potential users of this equipment.
- This cleaner is designed for recovery and collection of dust, debris and particulate matter only.
- This cleaner is not suitable for recovery and collection of any form of hazardous vapors. Do not use the cleaner if these vapors are present.
- This cleaner is not suitable for recovery and collection of flammable or explosive solvents, chemicals, or liquids. Do not use the cleaner if these liquids are present.

General Instructions

- Contact with the cleaner, dustbag, filter and all other accessories used when picking-up hazardous materials must be handled according to federal (EPA, OSHA), state and local regulations valid for the vacuumed substance.
- Do not use this cleaner for the removal of hazardous substances unless you are licensed and/or certified for this work by the all authorities having jurisdiction.

Instructions for Use

- Operation of the cleaner when picking up hazardous substances must be accompanied by the use of appropriate personal protective clothing and respiratory protection.
- Do not pick-up hazardous substances without the HEPA filter in place.
- If this vacuum cleaner is used to collect hazardous substances, do not attempt to open or empty its contents without the use of personal protective clothing and respiratory protection.
- If the cleaner is not working properly or has been dropped, damaged, left out doors, or dropped into water, return it to a qualified service center or dealer.
- This cleaner circulates ambient air for cooling the vacuum motor. Hazardous particles may accumulate in the internal motor cooling air ducts and could be released into the exhaust airstream at any time. If the cleaner is used in an enclosed contaminated environment, it should be committed exclusively to this type of environment and not operated outside of an enclosed and controlled environment.
- Before the cleaner and any accessories are removed from a controlled environment, all external surfaces must be decontaminated according to federal (EPA, OSHA), state and local regulations valid for the vacuumed substance.

Filter Replacement

- All disposed filters, bags, and debris should be treated as a hazardous substance and must be disposed in accordance with all federal, state, and local regulations.
- Use only approved Nilfisk-Advance vacuum filters and bags.
- The following is a recommended replacement interval for all of the filters and bag. These items should be replaced more often if you experience a loss of performance.
- **Disposable filter dust bags** – When the bag is 2/3 full it should be replaced. Excessive over filling of this bag makes it difficult to remove from the vacuum tank and can result in breakage and spills.
- **Main Filter** – This filter should be replaced or washed with every change of dust bag or whenever there is a visible collection of debris on the filter.
- **Cartridge Filter** – This filter should be replaced or washed with every change of dust bag or whenever there is a visible collection of debris on the filter.
- **HEPA filter** – Replace this filter at least every six months or more often if a loss of vacuum continues after you have replaced all other filters and the dust bag.

How to examine filters

- Filters collect and are contaminated with hazardous substances. The inspection and or replacement of any filter must only be done with the use of personal protective clothing, proper respiratory protection and in a controlled environment.
- The HEPA filter cannot be cleaned. Periodically make a visual inspection of each filter for a build-up of debris or damage to the sealing surfaces. If any filter appears to be clogged, damaged in any way, or has changed color (HEPA-filter should be white) which indicates excessive dirt build-up, replace with a new filter making sure to install new secondary and primary filters.
- If any visible dust particle emissions are observed in the vacuum exhaust air stream, stop operations immediately. If this occurs, the HEPA filter has ruptured or failed and must be replaced.

Service Instructions

- If this cleaner has been used to pick-up hazardous substances in an enclosed contaminated environment, the internal components of the powerhead may be contaminated.
- External decontamination of the cleaner must be carried out. However, external decontamination will not eliminate any internal contamination. Any servicing of the powerhead involving disassembly must be done inside of a contained environment by trained service personnel using appropriate personal protective clothing and respiratory protection.
- Any replaced components or debris collected during servicing should be treated as a hazardous substance and must be disposed of in accordance with all federal, state, and local regulations.
- All sealing rings and gaskets should be replaced anytime the unit is disassembled to assure high machine efficiency.

SPECIFICATIONS		Eliminator I	Eliminator II
Voltage @ 60Hz	Volts	120	120
Power	Watts	1350	1350
Current Draw	Amps	11.2	11.2
Waterlift, max	Inches of H ₂ O	95	95
Airflow, max	cfm	130	130
Noise level @ 3'3"	dB(A)	65	65
Filter Area, main filter	Sq.in.	225	225
Filter Area, HEPA	Sq.in.	1007	1007
Bag capacity	Gallons	2.25	7.25
Tank capacity, Dry/Wet	Gallons	5/3.6	12
Dimensions (LxWxH)	inches	17x16x22	24x17.25x36.5
Weight	pounds	20	35
Cord length	feet	50	50
Filter Efficiency, HEPA DOP tested		99.97% @ 0.3 microns	99.97% @ 0.3 microns

Specifications and details are subject to change without prior notice.